



Antelope Island Scarf

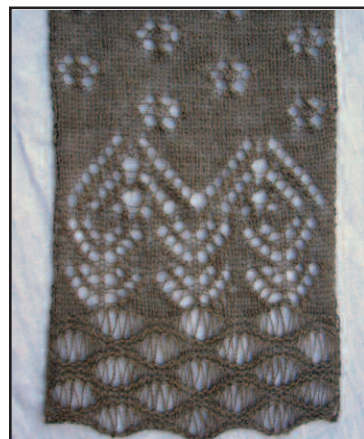
Finished Measurements: 51" x 8.5"

Gauge: 10 sts/2" in stockinette stitch after blocking

Yarn: 2 skeins of Fibre-Isle Magique Bison Cashmere, Fingering / 4 ply, 175 yards (160 meters)/25 grams (0.88 ounces), 50% Cashmere 50% Bison

Needles: Size 4

Notions: Stitch markers, sewing needle, blocking wires or pins



Scarf Half Directions (make 2 halves): CO 38 stitches.

Water lace pattern: Beginning with row 1 and working back and forth work chart pattern to row 8. Repeat rows 1-8 one more time and then rows 1-4 once.

NOTE FOR WATER LACE PATTERN: on WS rows above the YOs, drop all YOs off left-hand needle without working them

Grass lace pattern: Continue working chart rows 9-18. Repeat rows 11-18 one more time.

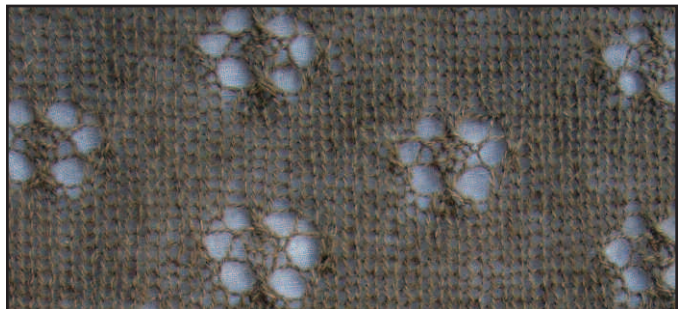
Mountain lace pattern: Work chart rows 19-34.

Cloud lace pattern: Work chart rows 35-50 eight times. Place stitches on a stitch holder leaving a long tail for grafting the stitches.

Finishing: Graph the two halves of the scarf together using the Kitchener stitch. Block the scarf to measurement to open up the lace pattern. After blocking, weave in ends.

Abbreviations:

- RS right side
- WS wrong side
- CO cast on
- K knit
- P purl
- YO yarn over
- K2tog knit 2 sts together
- SSK slip, slip, knit
- SK2P slip, knit 2 together, pass slipped stitch over



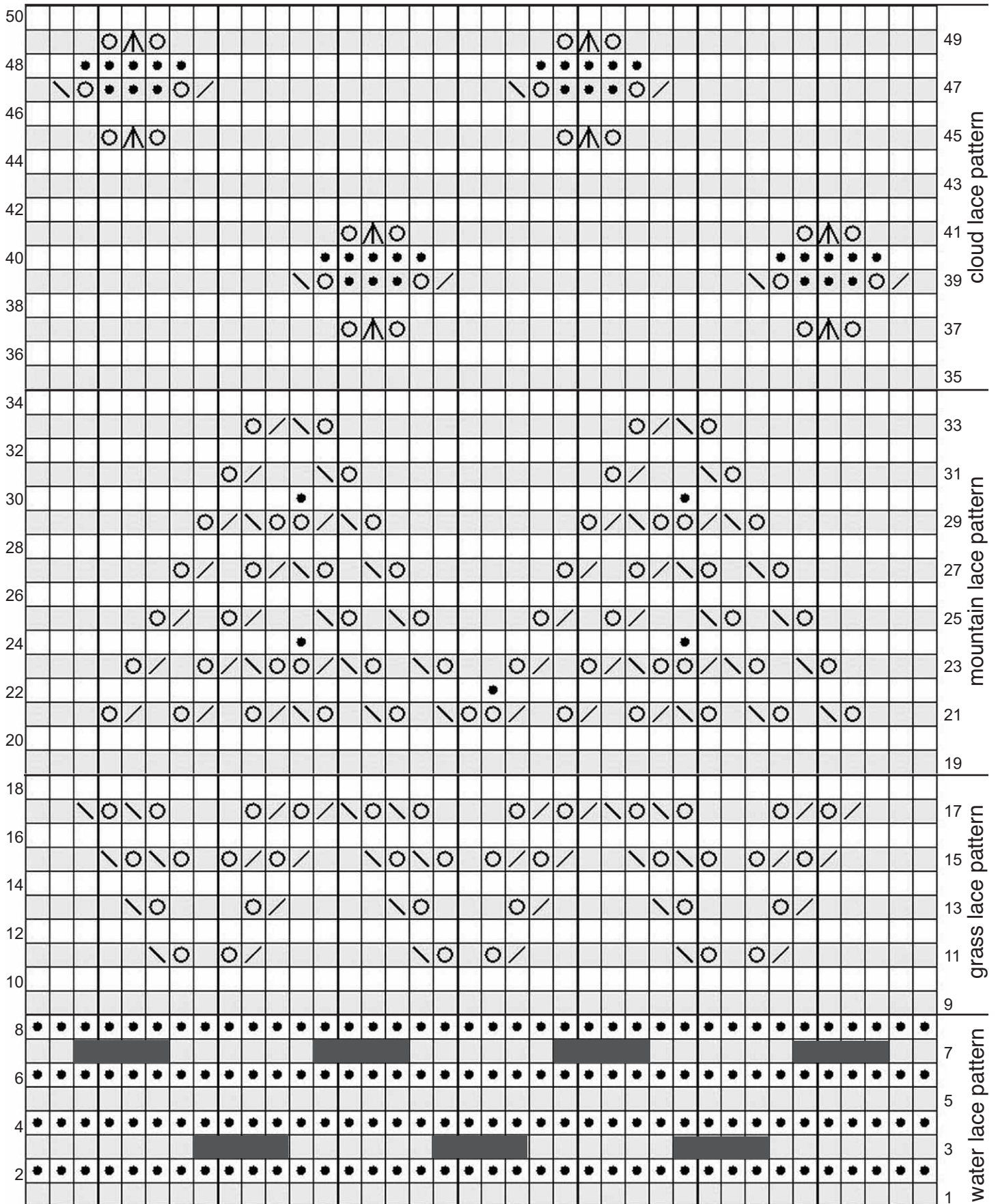
Pattern by:

Virginia Catherall








lake•salt•knit

lakesaltknit.blogspot.com/
Ravelry: vcatherall
© 2012

Antelope Island Scarf Chart



Key:

- | | | | |
|---|---|--|---|
|  K on RS/P on WS |  K2tog |  SK2P |  (YO) twice, K1, (YO) 3 times, K1, (YO) 4 times, K1, (YO) 3 times, K1 |
|  P on RS/K on WS |  SSK |  YO | (YO) twice |